

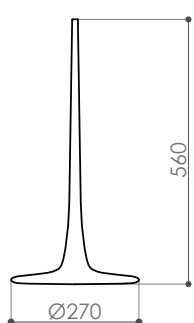
melogranoblu

HYDRA LHASA glass

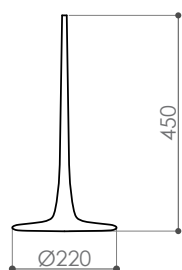
design E. Rocchi & M. Crema - 2008

DESCRIZIONE	Hydra system hand blown glass pendant
Environment:	Indoor
Mounting:	Suspension with metallic mesh cord or with steel cable
Body:	Frosted or transparent ruled hand blown glass
Weight:	760 g (large), 560 g (medium), 390 g (small)

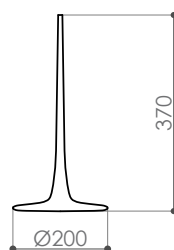
dimensions in mm



Lhasa large



Lhasa medium



Lhasa small



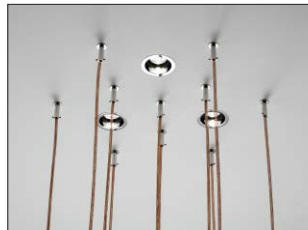
melogranoblu

LIGHT SOURCES USABLE

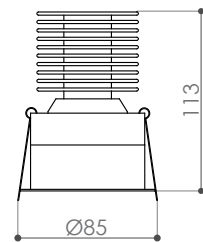
IP20   CE **LED**

↳ *INDIRECT LIGHT_ outer glass source*

↳ *RECESSED (only with false ceiling)*

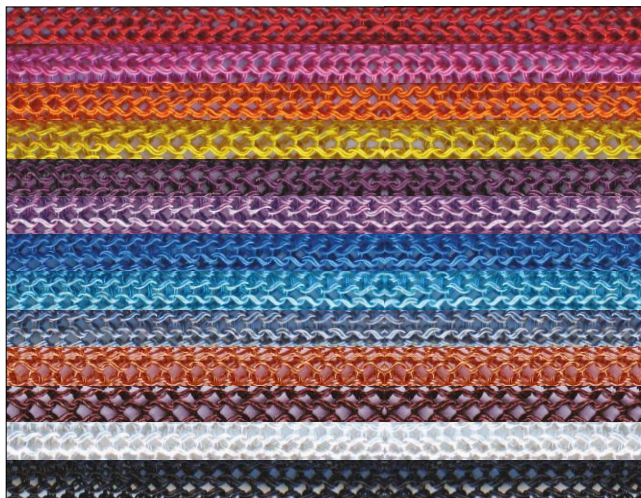


Recessed LED spotlight 10W,
24Vdc, 2700 K cri93 optic 6°
circular body ø 85 mm.



HANGING SYSTEMS

↳ *METALLIC MESH CORD Ø 8mm*



#T11 Red
#T34 Fuxia
#T39 Orange
#T26 Gold
#T36 Purple
#T35 Wistaria
#T12 China Blue
#T29 Turquoise
#T08 Titanium
#T00 Copper
#T20 Brown
#T07 Silver
#T21 Black

↳ *STEEL CABLE Ø 0,6 mm*

